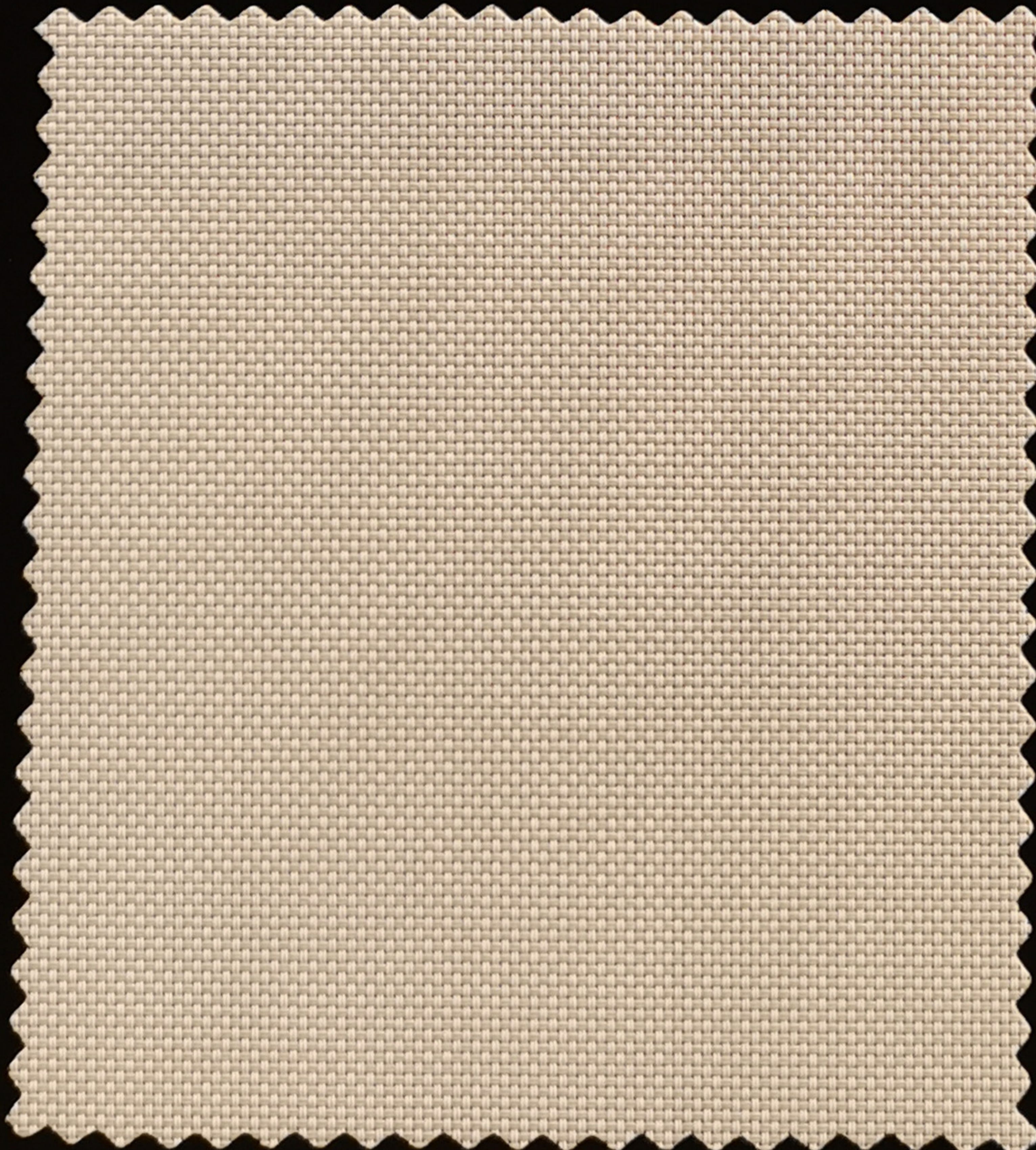
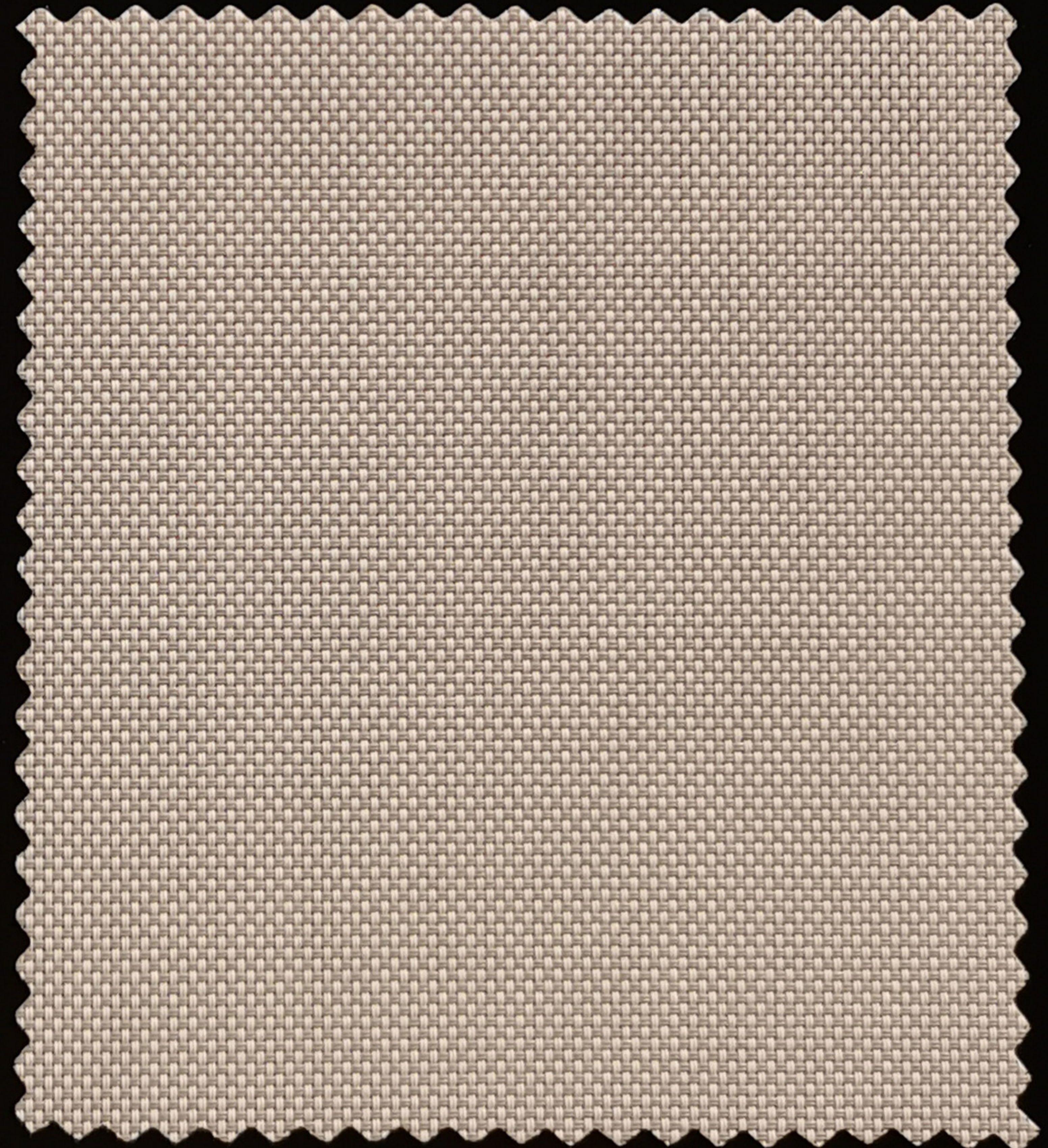


W0001



W0002



W0005

## Specifications

Series	W0000
Composition	25%Polyester,75% PVC
Width(cm)	200/250/300
Openness Factor(%)	Approximately 2%
Thickness(mm)	0.43±5%
Weight(g/m <sup>2</sup> )	325±5%
Breaking Strength(n)	Warp≥1350/Weft ≥1100
UV Blockage	Approximately 98%
Bacteria and Fungal Resistance	ASTM G21
Color Fastness	ISO 105 B02 ,Grade 8
Lead Free	16 CFR 1303(U.S.A)
Fire Classification	NFPA 701:2015 TM#2 BS5867 Part2 Type B DIN 4102-1 B1
Environmental Certification	GREENGUARD Gold Certification

Item NO.	Ts	Rs	As	Tv	Rv	Av	Tuv	O-F*	1/8CL	1/4CL	1/4H.A
W0001	21	68	11	19	51	30	6	7	0.33	0.33	0.32
W0002	22	58	20	18	43	39	6	7	0.41	0.40	0.35
W0005	17	47	36	16	36	48	7	8	0.47	0.46	0.38

### Changzhou Bestex Technical Textile Co., Ltd.

Tel: Overseas 86-519-85078815/Mainland 86-519-85078813

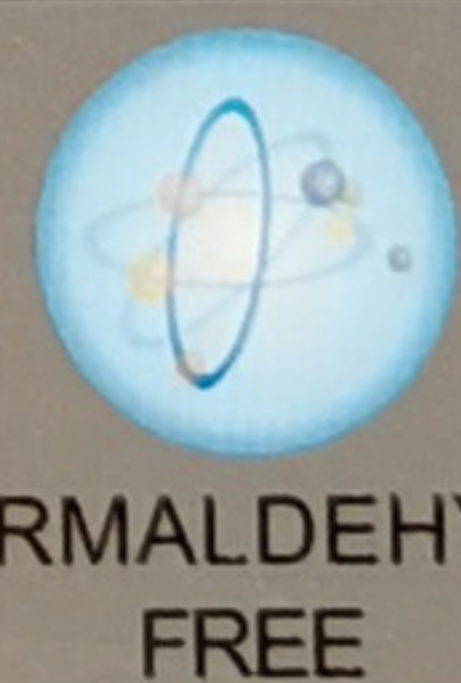
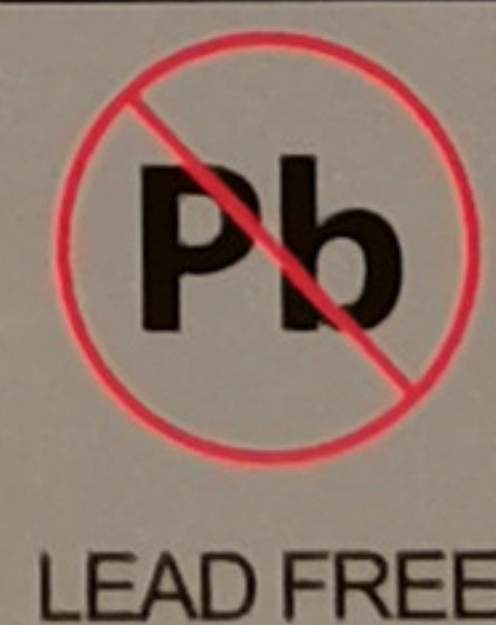
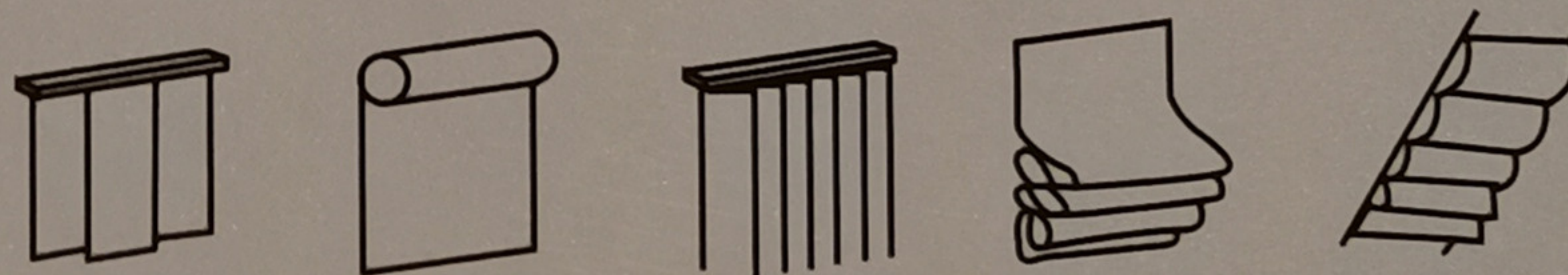
Fax: 86-519-85329982

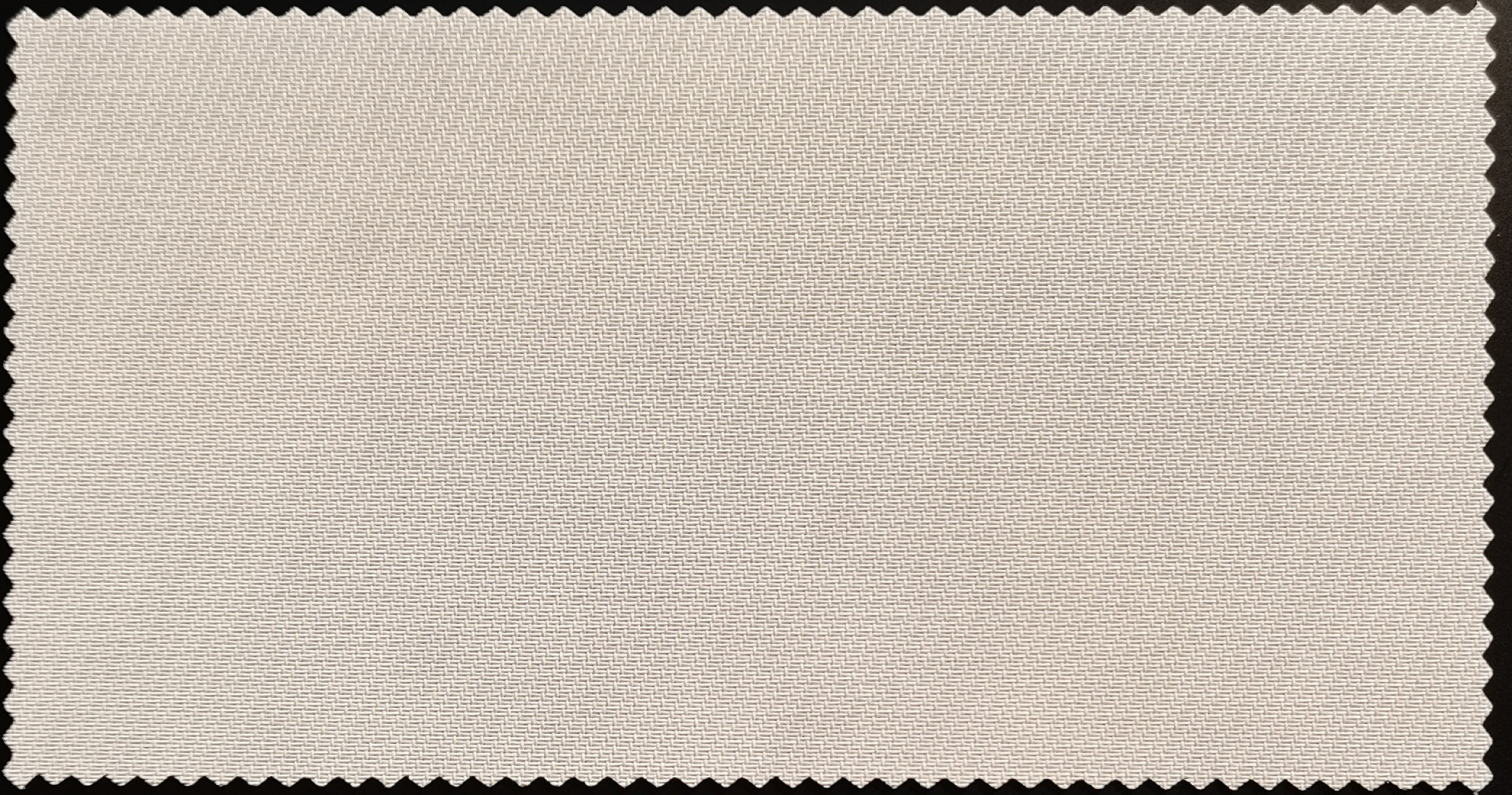
Website: [www.bestex.com.cn](http://www.bestex.com.cn)

E-mail: [marketing@bestex.com.cn](mailto:marketing@bestex.com.cn)

Add: Hongmei Science & Technology Park,Longcheng Rd,Changzhou,213017,Jiangsu,China

**For complete technical information,test results and larger samples,please contact our Marketing Department.**





W0401



W0402



W0405



W0406

## Specifications

Series	W0400
Composition	25%Polyester,75% PVC
Width(mm)	200/250/300
Openness Factor(%)	Approximately 2%
Thickness(mm)	0.46±5%
Weight(g/m <sup>2</sup> )	325±5%
Breaking Strength(n)	Warp≥1350/Weft≥1100
UV Blockage	Approximately 98%
Bacteria and Fungal Resistance	ASTM G21
Color Fastness	ISO 105 B02 ,Grade 8
Extractable Heavy Metal	ISO 105/E04
Fire Classification	NFPA 701:2015 TM#2 BS5867 Part2 Type B DIN 4102-1 B1
Environmental Certification	GREENGUARD Gold Certification

### Changzhou Bestex Technical Textile Co., Ltd.

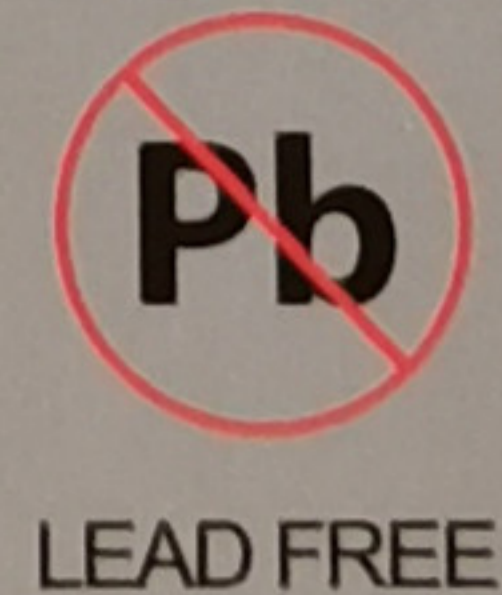
Tel: Overseas 86-519-85078815/Mainland 86-519-85078813

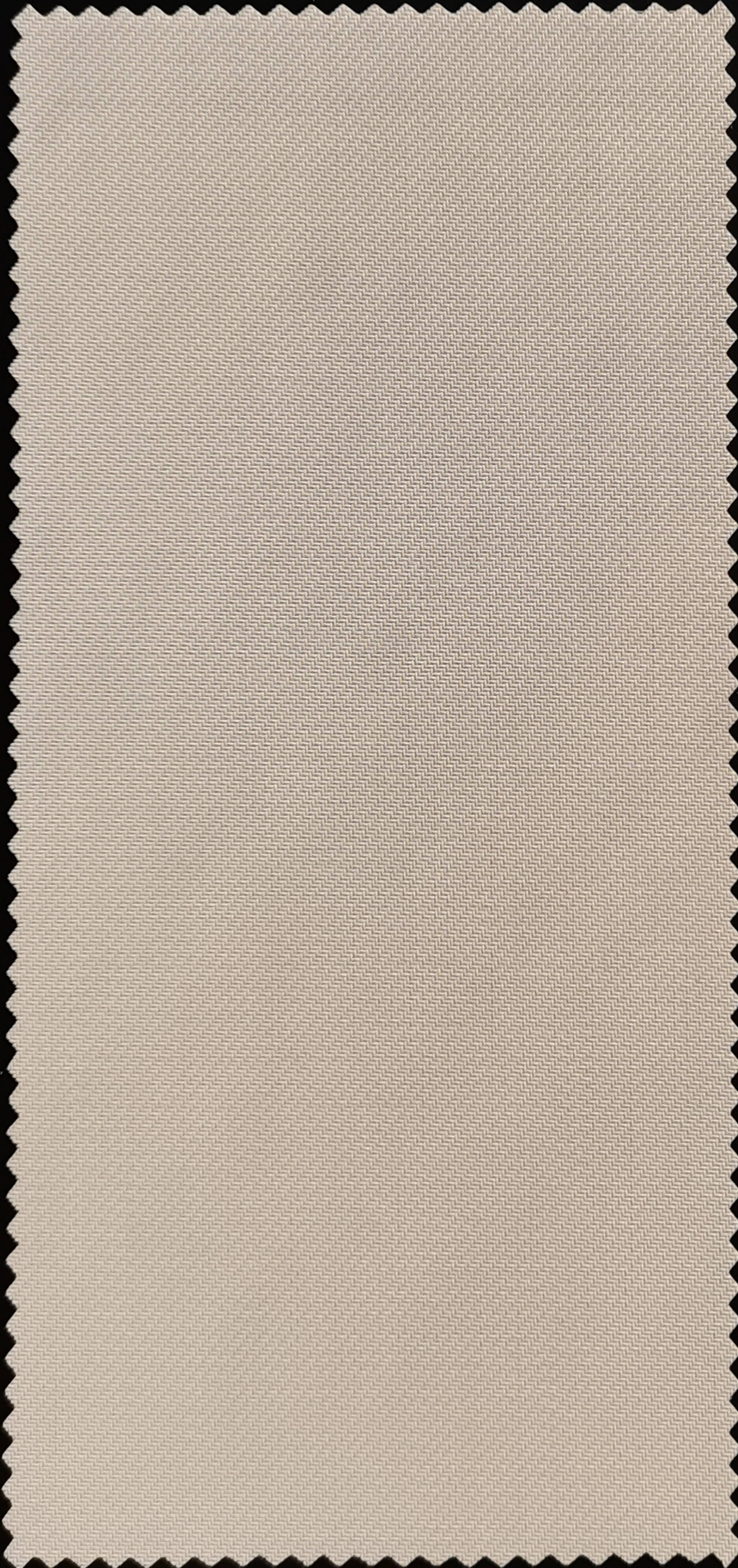
Fax: 86-519-85329982

Website: [www.bestex.com.cn](http://www.bestex.com.cn)

E-mail: [marketing@bestex.com.cn](mailto:marketing@bestex.com.cn)

**For complete technical information, test results and larger samples, please contact our Marketing Department.**

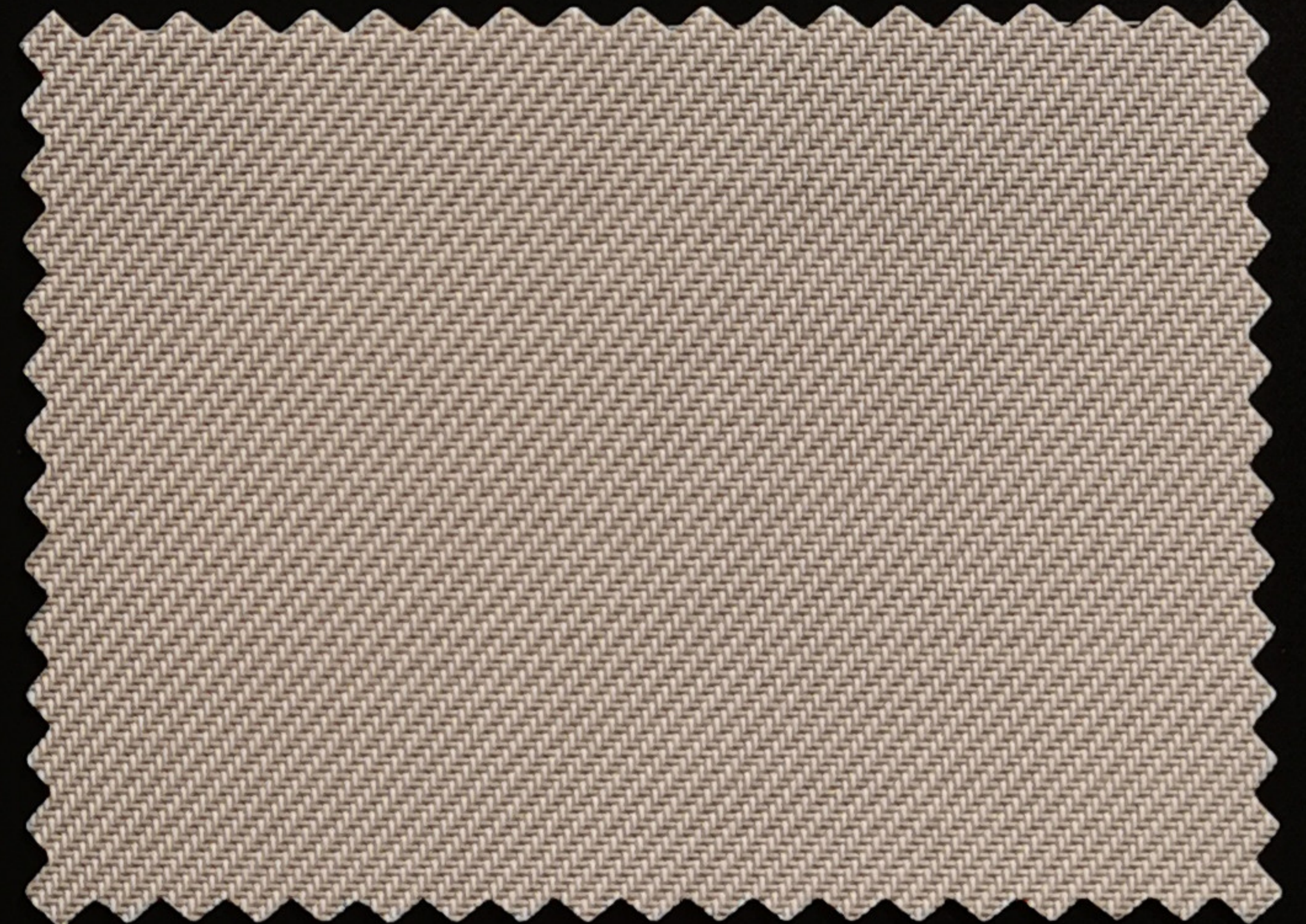




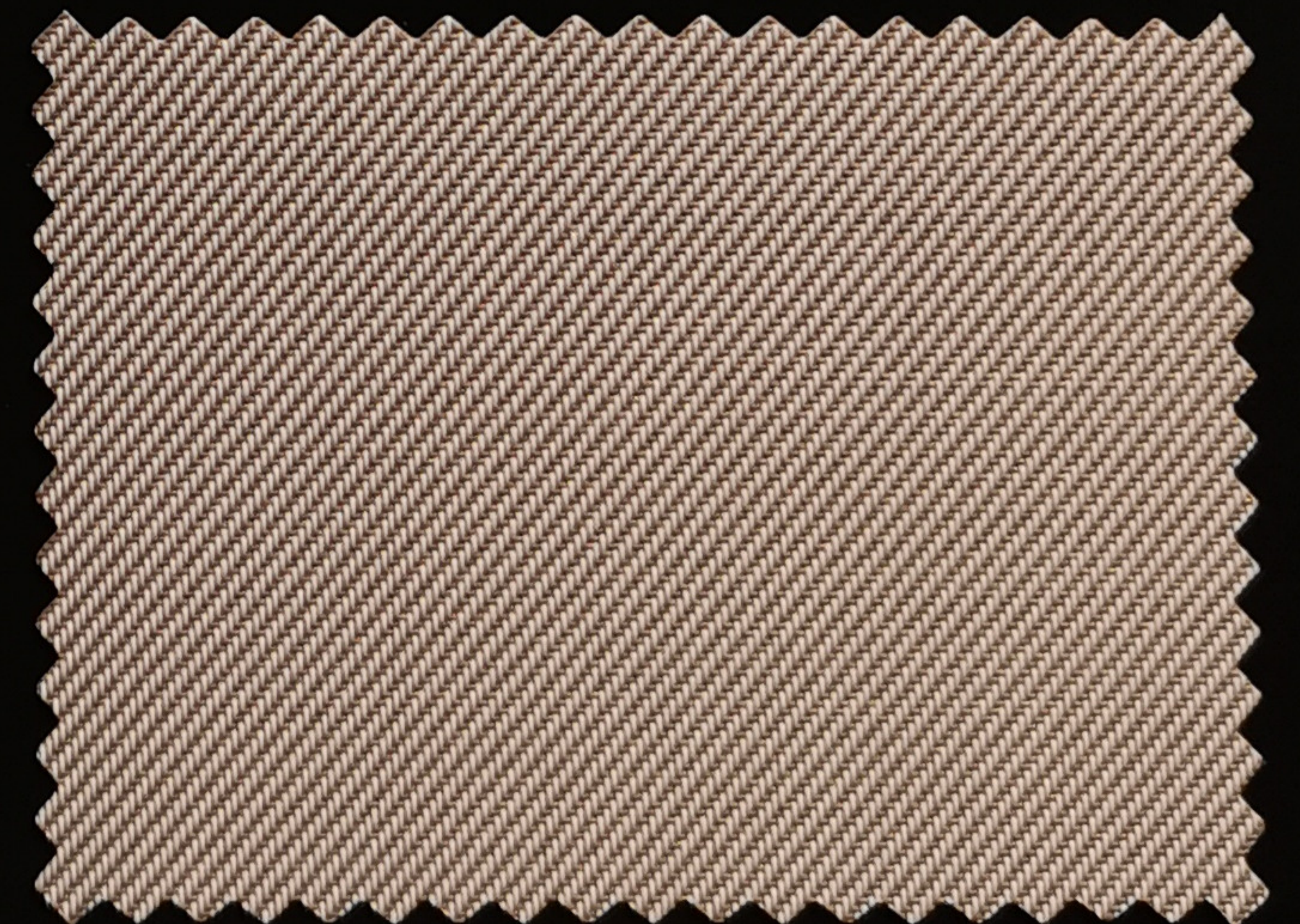
W0501



W0502



W0505



W0511

# SERIES W0500

## Specifications

Series	W0500
Composition	25%Polyester,75% PVC
Width(cm)	200/250/300
Openness Factor(%)	Approximately 2%
Thickness(mm)	0.43±5%
Weight(g/m <sup>2</sup> )	325±5%
Breaking Strength(n)	Warp≥1350/Weft ≥1100
UV Blockage	Approximately 98%
Bacteria and Fungal Resistance	ASTM G21
Color Fastness	ISO 105 B02,Grade 8
Extractable Heavy Metal	ISO 105/E04
Fire Classification	NFPA 701:2015 TM#2 BS5867 Part2 Type B DIN 4102-1 B1
Environmental Certification	GREENGUARD Gold Certification

### Changzhou Bestex Technical Textile Co., Ltd.

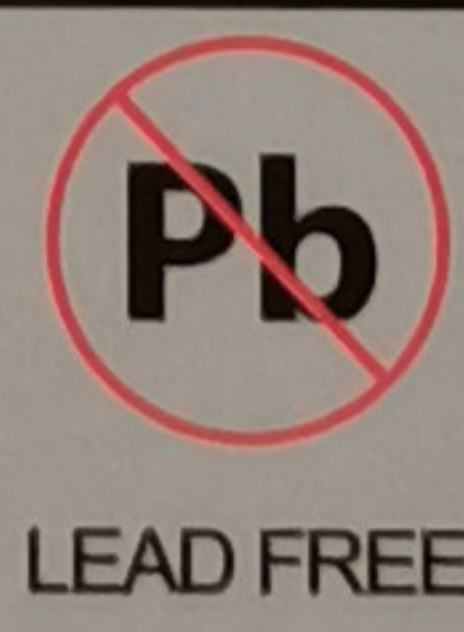
Tel: Overseas 86-519-85078815/Mainland 86-519-85078813

Fax: 86-519-85329982

Website: [www.bestex.com.cn](http://www.bestex.com.cn)

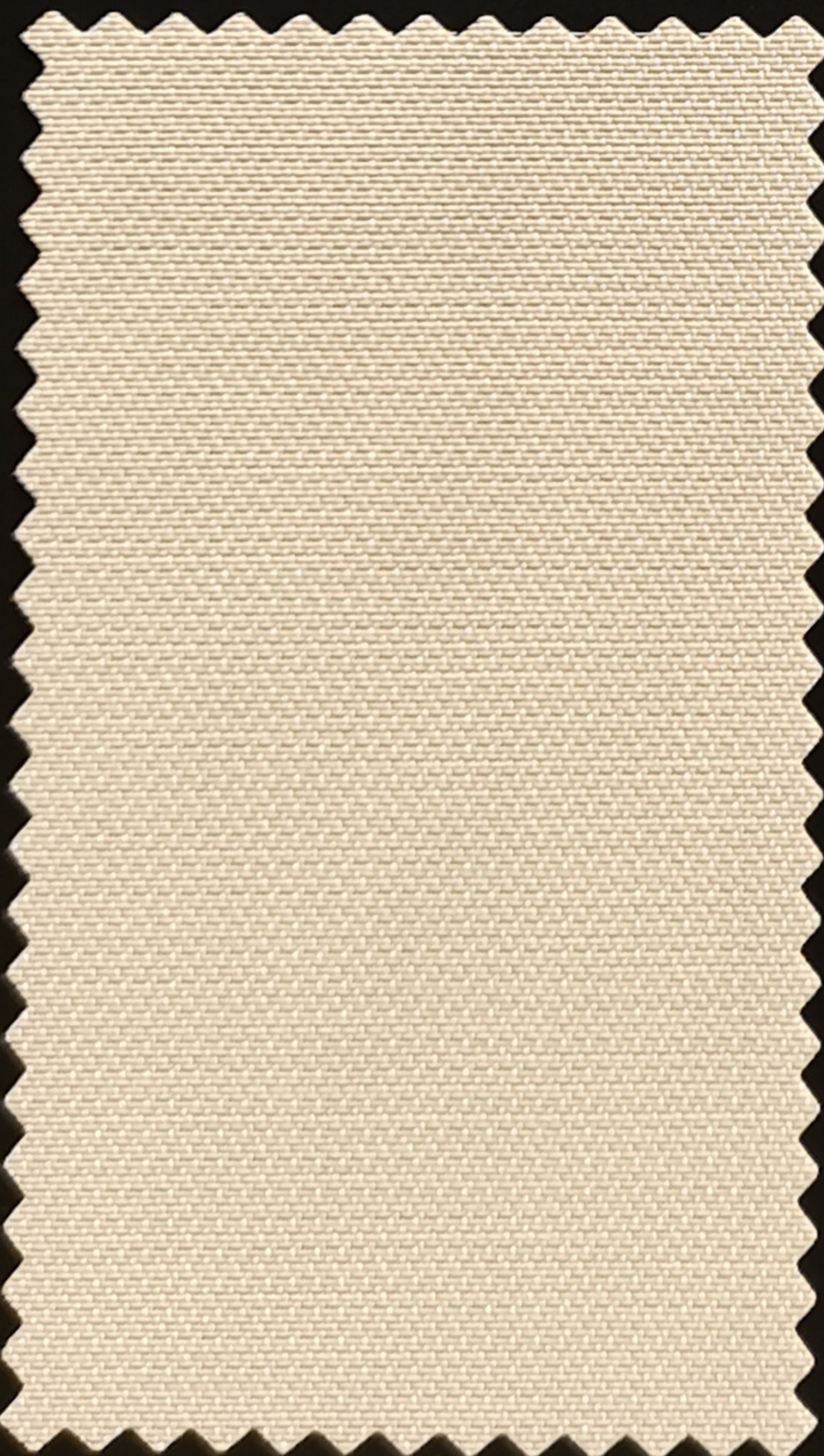
E-mail: [marketing@bestex.com.cn](mailto:marketing@bestex.com.cn)

**For complete technical information, test results and larger samples, please contact our Marketing Department.**

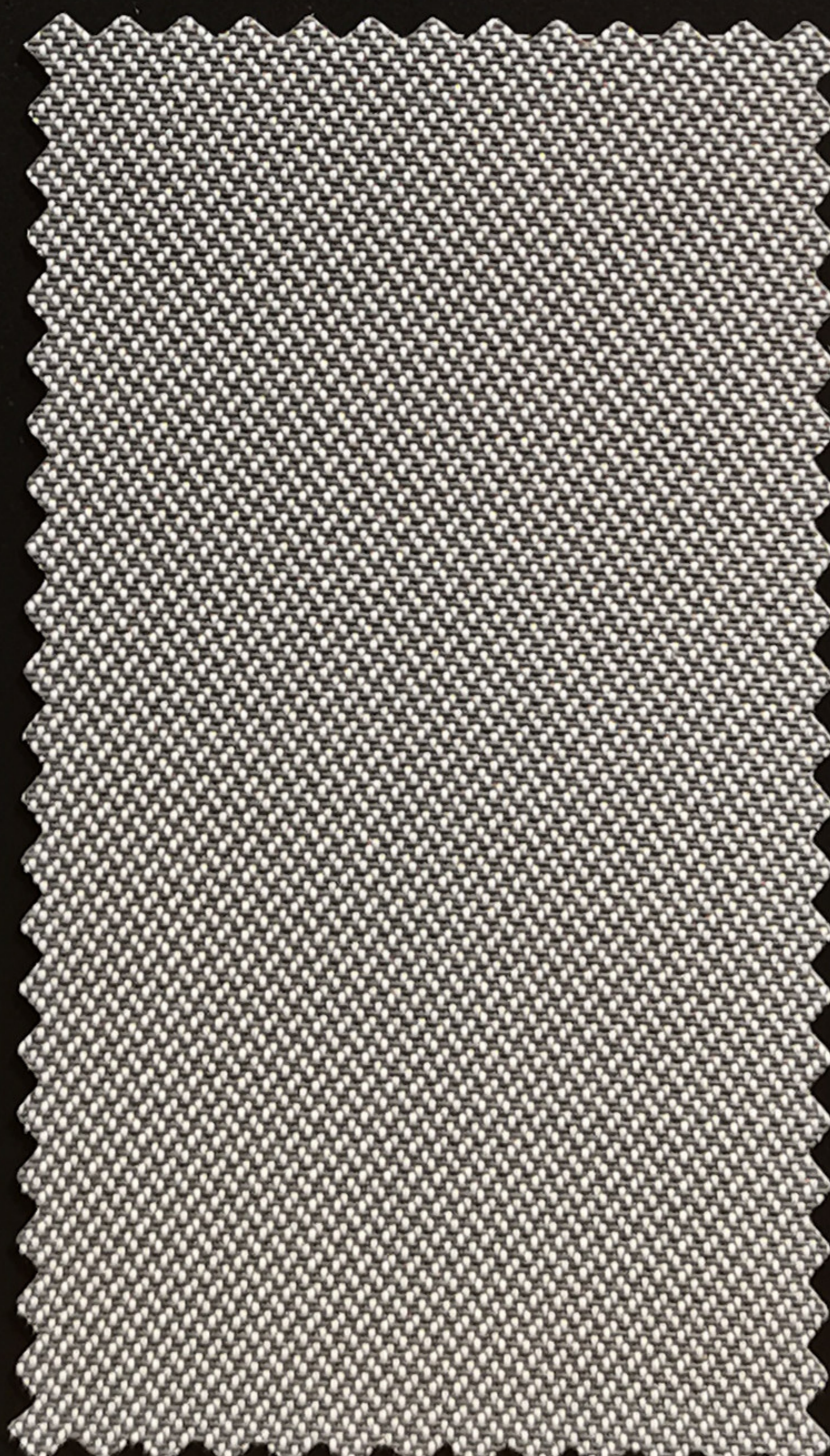




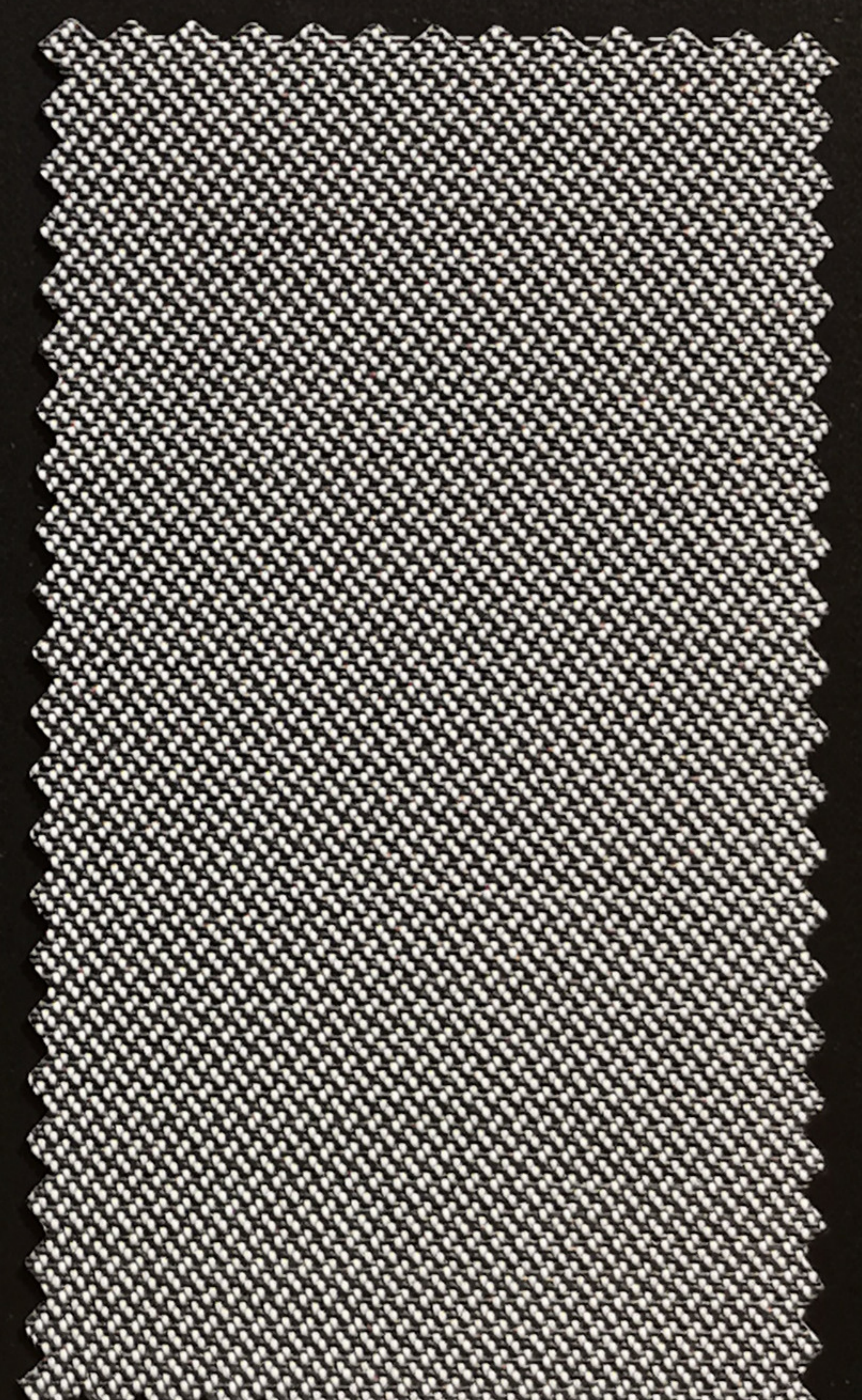
W0801



W0802



W0805



W0813

# SERIES W0800

## Specifications

Series	W0800
Composition	25%Polyester,75% PVC
Width(cm)	200/250/300
Openness Factor(%)	Approximately 2%
Thickness(mm)	0.43±5%
Weight(g/m <sup>2</sup> )	325±5%
Breaking Strength(n)	Warp≥1350/Weft≥1100
UV Blockage	Approximately 98%
Bacteria and Fungal Resistance	ASTM G21
Color Fastness	ISO 105 B02,Grade 8
Extractable Heavy Metal	ISO 105/E04
Fire Classification	NFPA 701:2015 TM#2 BS5867 Part2 Type B DIN 4102-1 B1
Environmental Certification	GREENGUARD Gold Certification

### Changzhou Bestex Technical Textile Co., Ltd.

Tel: Overseas 86-519-85078815/Mainland 86-519-85078813

Fax: 86-519-85329982

Website: [www.bestex.com.cn](http://www.bestex.com.cn)

E-mail: [marketing@bestex.com.cn](mailto:marketing@bestex.com.cn)

**For complete technical information, test results and larger samples, please contact our Marketing Department.**

